

TBJ-隔爆·NPT外螺纹大/内螺纹小

TBJ-隔爆·公制外螺纹小/内螺纹大

防爆变径接头

reducer union

防爆变径接头

reducer union



| | |
|-----------------|---|
| 材质 Material | 黄铜、黄铜镀镍或不锈钢 (订货时请指明) Brass, brass nickel plated or stainless steel (When ordering, please specify) |
| 特点 Features | 适用于螺纹转换或需变径的场所 Suitable for thread conversion or reducing place |
| 防爆标志 Ex mark | ExdII C Gb |
| 工作温度 COT | -60°C ~100°C |



| | |
|-----------------|---|
| 材质 Material | 黄铜、黄铜镀镍或不锈钢 (订货时请指明) Brass, brass nickel plated or stainless steel (When ordering, please specify) |
| 特点 Features | 适用于螺纹转换或需变径的场所 Suitable for thread conversion or reducing place |
| 防爆标志 Ex mark | ExdII C Gb |
| 工作温度 COT | -60°C ~100°C |

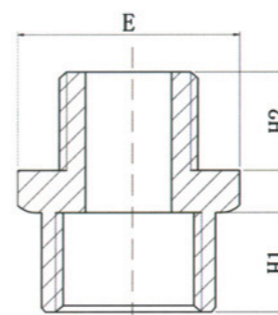
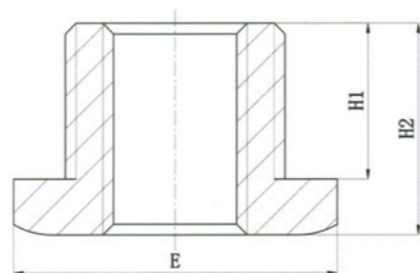


1、可选附件：锁紧螺母、O型圈、平垫圈、锯齿圈、接地片

1、Optional accessories: reducer union ;lock nut,O Ring,flat washer,serrated washers,sheath,grounding

1、可选附件：锁紧螺母、O型圈、平垫圈、锯齿圈、接地片

1、Optional accessories: reducer union ;lock nut,O Ring,flat washer,serrated washers,sheath,grounding



订购示例 (eg) : TBJ-NPT1/NPT3/4

单位:mm

| 规格型号 Gland size | 外螺纹 external thread | 内螺纹 internal thread | H1 | H2 | E |
|-----------------------|------------------------|------------------------|------|----|----|
| TBJ-NPT3/8/NPT1/4 | NPT3/8 | NPT1/4 | 15.3 | 19 | 26 |
| TBJ-NPT1/2/NPT3/8 | NPT1/2 | NPT3/8 | 20 | 24 | 30 |
| TBJ-NPT3/4/NPT1/2 | NPT3/4 | NPT1/2 | 20.2 | 24 | 35 |
| TBJ-NPT1/NPT1/2 | NPT1 | NPT1/2 | 25.1 | 30 | 44 |
| TBJ-NPT1/NPT3/4 | NPT1 | NPT3/4 | 25.1 | 30 | 44 |
| TBJ-NPT1-1/NPT3/4 | NPT1-1/4 | NPT3/4 | 25.7 | 30 | 58 |
| TBJ-NPT1-1/4/NPT1 | NPT1-1/4 | NPT1 | 25.7 | 30 | 58 |
| TBJ-NPT1-1/2/NPT1 | NPT1-1/2 | NPT1 | 26.1 | 32 | 69 |
| TBJ-NPT1-1/2/NPT1-1/4 | NPT1-1/2 | NPT1/4 | 26.1 | 32 | 69 |
| TBJ-NPT2/NPT1-1/4 | NPT2 | NPT1/4 | 26.9 | 32 | 81 |
| TBJ-NPT2/NPT1-1/2 | NPT2 | NPT1/2 | 26.9 | 32 | 81 |
| TBJ-NPT2-1/2/NPT1-1/2 | NPT2-1/2 | NPT1/2 | 40.1 | 46 | 98 |

订购示例 (eg) : TBJ-M32 × 1.5/M40 × 1.5

单位:mm

| 规格型号 Gland size | 外螺纹 external thread | 内螺纹 internal thread | H1 | H2 | E |
|-------------------------|------------------------|------------------------|----|----|----|
| TBJ-M12 × 1.5/M16 × 1.5 | M12 × 1.5 | M16 × 1.5 | 16 | 15 | 26 |
| TBJ-M16 × 1.5/M20 × 1.5 | M16 × 1.5 | M20 × 1.5 | 16 | 15 | 32 |
| TBJ-M20 × 1.5/M25 × 1.5 | M20 × 1.5 | M25 × 1.5 | 16 | 15 | 35 |
| TBJ-M20 × 1.5/M32 × 1.5 | M20 × 1.5 | M32 × 1.5 | 16 | 15 | 44 |
| TBJ-M25 × 1.5/M32 × 1.5 | M25 × 1.5 | M32 × 1.5 | 16 | 15 | 44 |
| TBJ-M25 × 1.5/M40 × 1.5 | M25 × 1.5 | M40 × 1.5 | 16 | 15 | 58 |
| TBJ-M32 × 1.5/M40 × 1.5 | M32 × 1.5 | M40 × 1.5 | 16 | 15 | 58 |
| TBJ-M32 × 1.5/M50 × 1.5 | M32 × 1.5 | M50 × 1.5 | 16 | 15 | 69 |
| TBJ-M40 × 1.5/M50 × 1.5 | M40 × 1.5 | M50 × 1.5 | 16 | 15 | 69 |
| TBJ-M40 × 1.5/M63 × 1.5 | M40 × 1.5 | M63 × 1.5 | 16 | 15 | 81 |
| TBJ-M50 × 1.5/M63 × 1.5 | M50 × 1.5 | M63 × 1.5 | 16 | 15 | 81 |
| TBJ-M50 × 1.5/M75 × 1.5 | M50 × 1.5 | M75 × 1.5 | 16 | 15 | 98 |